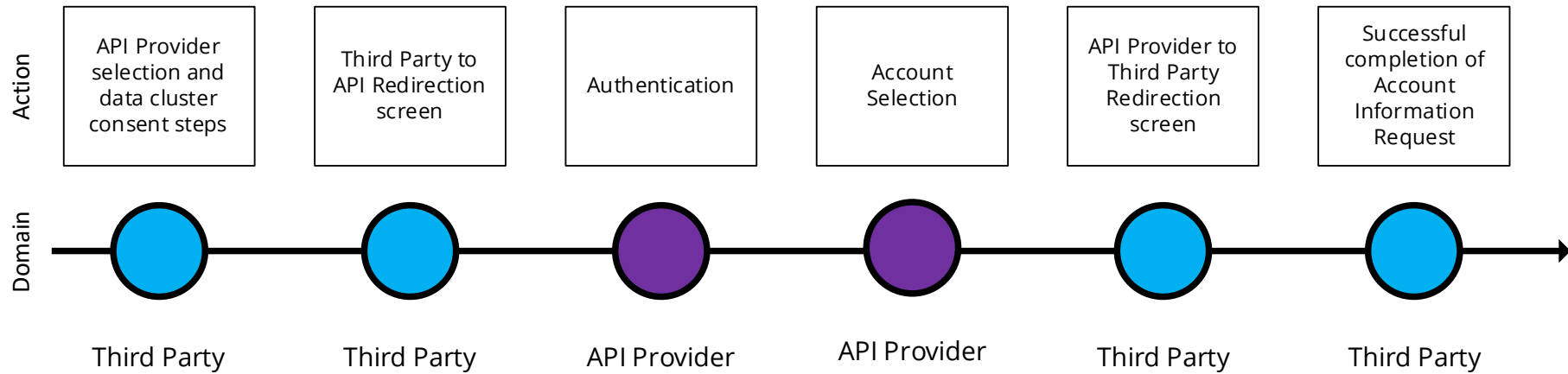
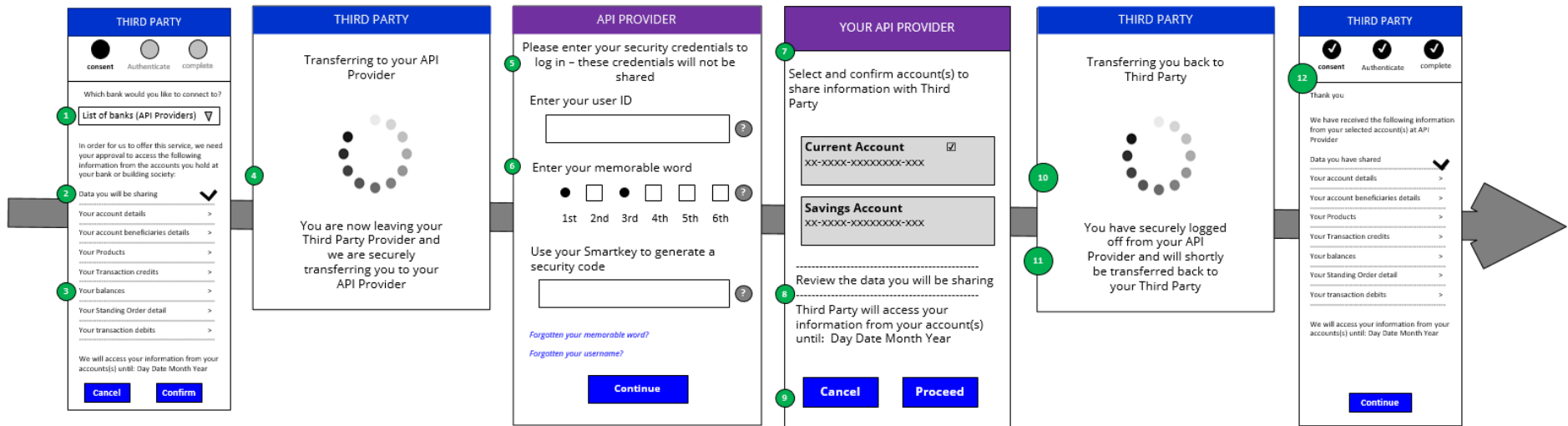


3.2.1.1 Journey map

Browser Based Redirection – Account Information Services (AIS)

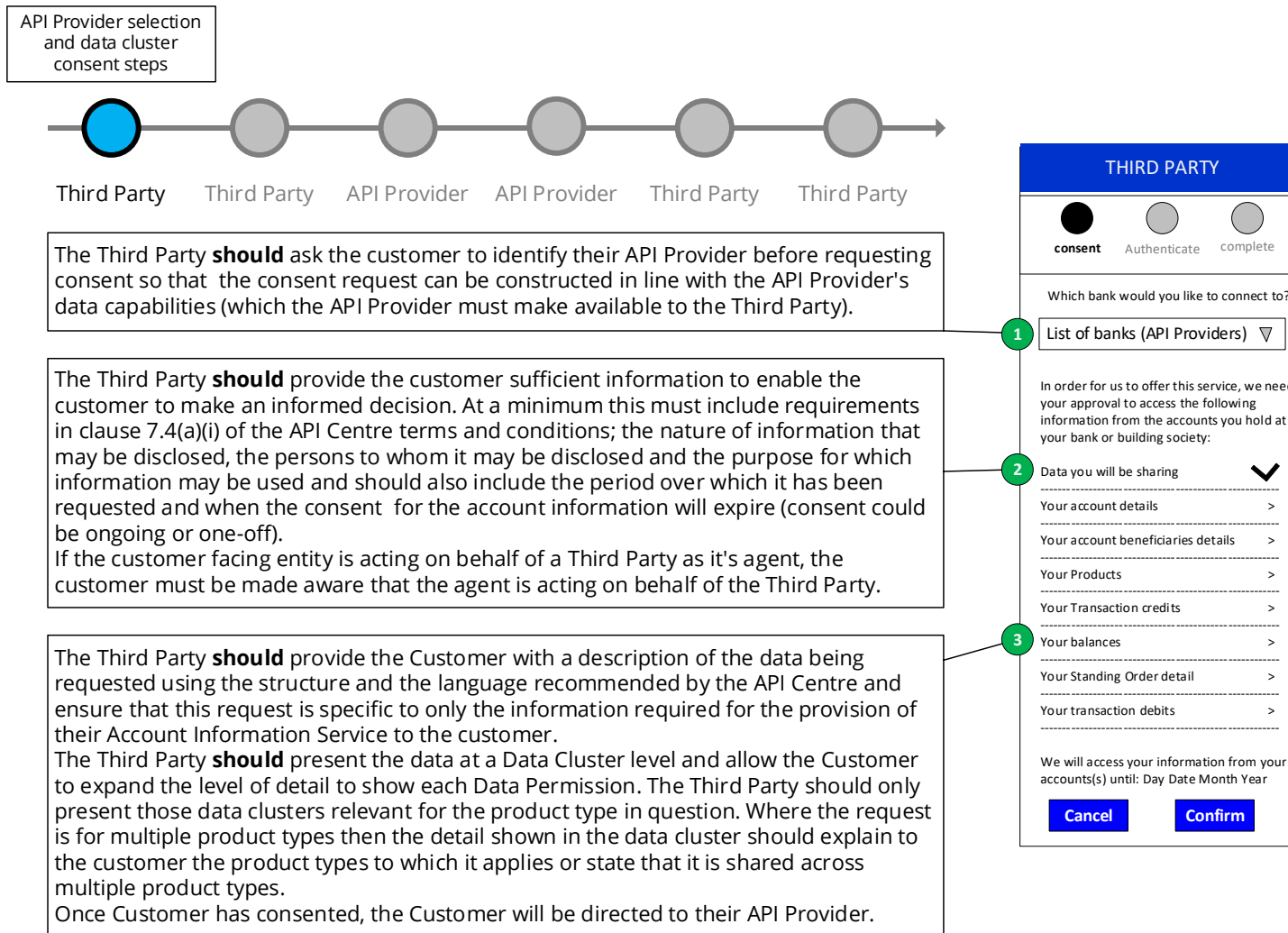


3.2.1.2 Wireframe journey

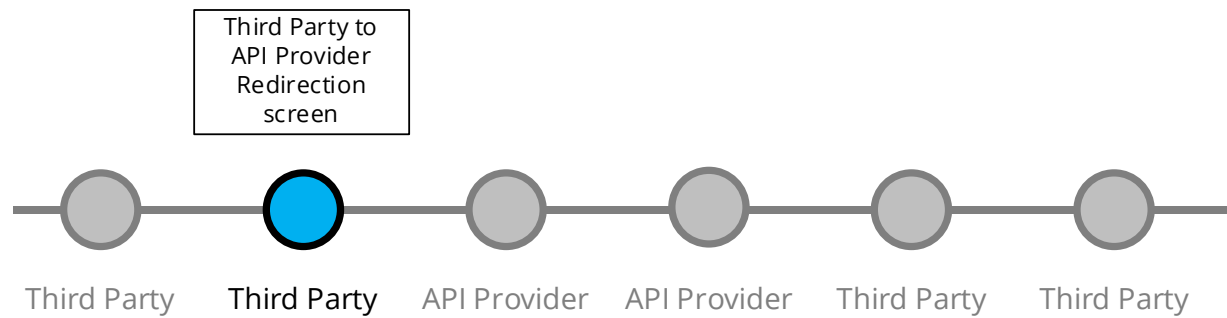


3.2.1.3 Wireframe annotations

3.2.1.3.1 API Provider selection



3.2.1.3.2 Third Party redirection




The redirection **should** take the Customer to the API Provider web page (desktop/mobile) for authentication purposes only without introducing any additional screens.

The web based authentication **should** have no more than the number of steps that the Customer would experience when directly accessing the web based API Provider channel (desktop/mobile).

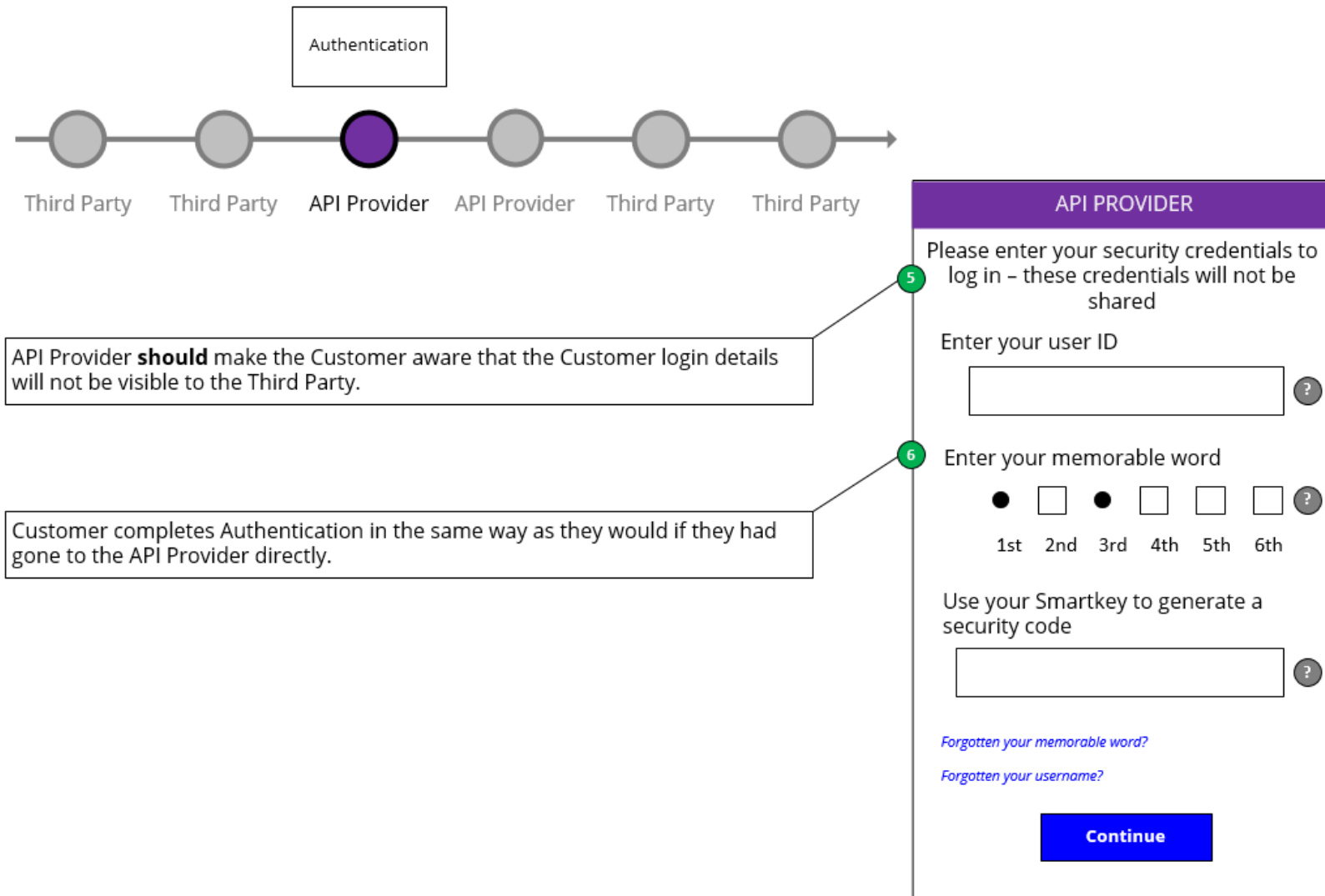
THIRD PARTY

Transferring to your API Provider

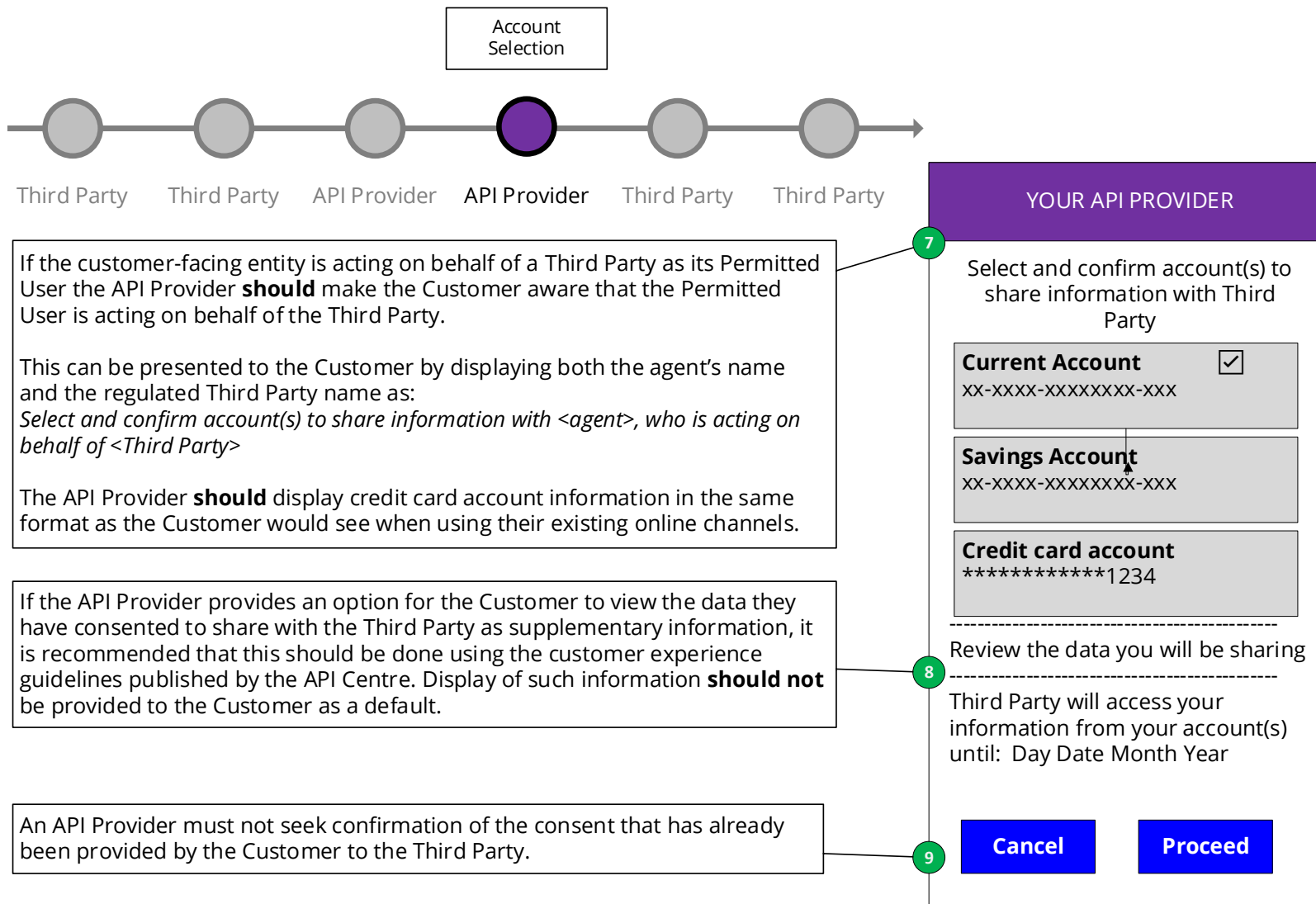


You are now leaving your Third Party Provider and we are securely transferring you to your API Provider

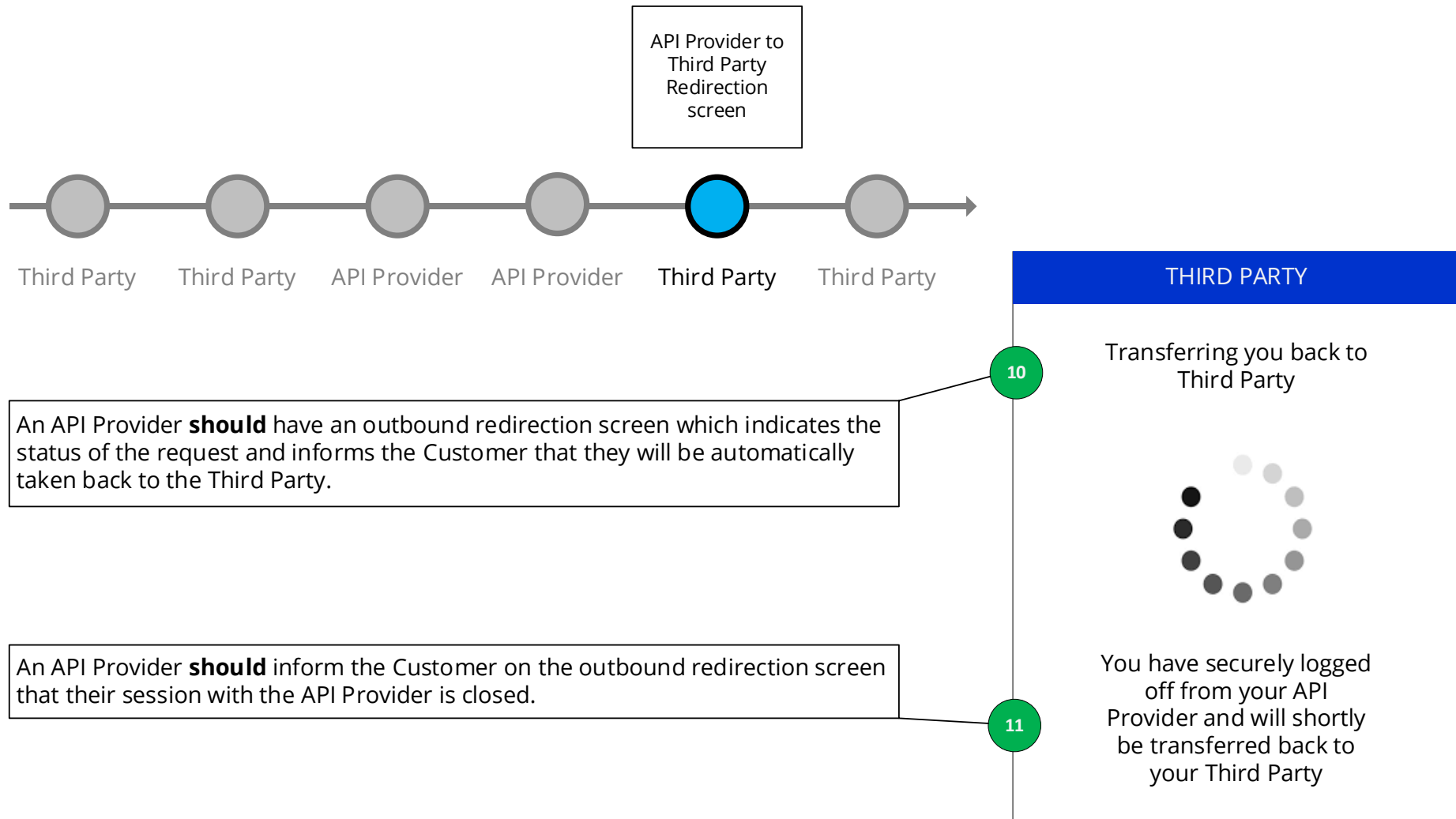
3.2.1.3.3 Authentication



3.2.1.3.4 Account selection



3.2.1.3.5 API Provider redirection



3.2.1.3.6 Third Party Confirmation

